

LABORATORY FINDINGS

Description 1 Loose Stone

Weight 7.49 ct

Dimensions 13.55 x 8.95 x 5.58 mm

Shape Oval

Cutting Style Cabochon

Crown Cabochon

Pavilion Polished

Transparency Transparent

Color (Daylight) Red

Saturation Intense

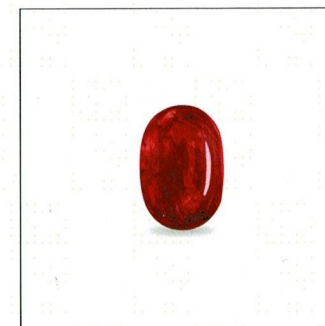
Tone Medium-Deep

Enhancements FF-O2, No indications of heating

ID →

NATURAL
RUBY

SNA03



ORIGIN

Myanmar (Burma)

Since ancient times Myanmar has produced gems of extraordinary quality, including some of the finest rubies, sapphires and spinels in the world.

Lotus Gemology is the world's only lab exclusively devoted to ruby, sapphire & spinel.

This report is a professional opinion based on the results of scientific tests, coupled with the extensive experience of Lotus gemologists. The following pages contain information crucial to understanding the results.

Verify this report by referencing Report No. 7847-7070 with PIN No. 960749 at LotusGemology.com.

Lotus Gemology

Silom 19 Building, Suite 411 • 45/1 Soi 19, Silom Rd.

Bangkok 10500 • Thailand

Tel: +66 2 117 3616

info@lotusgemology.com • www.lotusgemology.com