

## LABORATORY FINDINGS

Description 1 Loose Stone

Weight 1.03 ct

Dimensions 6.23 x 5.47 x 3.94 mm

Shape Oval

Cutting Style Faceted

Crown Brilliant  
Pavilion Step

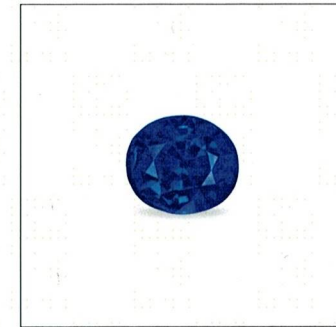
Transparency Transparent

Color (Daylight) Blue

Saturation Vivid  
Tone Deep

Enhancements No indications of heating/treatment

ID →

NATURAL  
SAPPHIRE

ORIGIN

**Myanmar (Burma)**

Since ancient times Myanmar's Mogok Stone Tract has produced gems of extraordinary quality, including some of the finest rubies, sapphires and spinels in the world.

COLOR TYPE

**Royal Blue**

The exceptionally rich azure blue color of this gem earns it the Lotus "Royal Blue" distinction.

Lotus Gemology is the world's only lab exclusively devoted to ruby, sapphire & spinel.

This report is a professional opinion based on the results of scientific tests, coupled with the extensive experience of Lotus gemologists. The following pages contain information crucial to understanding the results.

Verify this report by referencing Report No. 1730-6218 with PIN No. 231411 at [LotusGemology.com](http://LotusGemology.com).

**Lotus Gemology**

Silom 19 Building, Suite 411 • 45/1 Soi 19, Silom Rd.  
Bangkok 10500 • Thailand  
Tel: +66 2 117 3616  
[info@lotusgemology.com](mailto:info@lotusgemology.com) • [www.lotusgemology.com](http://www.lotusgemology.com)