

LABORATORY FINDINGS

Description 1 Loose Stone

Weight 1.71 ct

Dimensions 7.84 x 5.46 x 3.55 mm

Shape Antique Cushion

Cutting Style Faceted

Crown Brilliant

Pavilion Step

Transparency Transparent

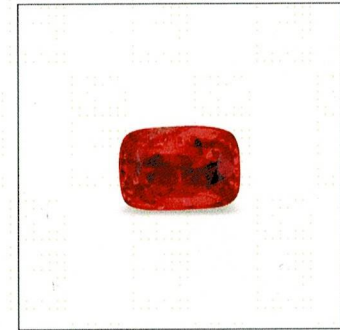
Color (Daylight) Red

Saturation Vivid

Tone Medium-Deep

Enhancements FF-O1, No indications of heating

ID →

NATURAL
RUBY

ORIGIN

Burma (Myanmar)

In the early 1990s, rubies of extraordinary quality were unearthed at Mong Hsu, in Myanmar's Shan State. Stoplight red in color, they rank among the finest rubies ever found.

COLOR TYPE

Pigeon's Blood

The highly saturated crimson color of this gem earns it the Lotus "Pigeon's Blood" distinction.

Lotus Gemology is the world's only lab exclusively devoted to ruby, sapphire & spinel. This report is a professional opinion based on the results of scientific tests, coupled with the extensive experience of Lotus gemologists. The following pages contain information crucial to understanding the results.

Verify this report by referencing Report No. 5922-2730 with PIN No. 860120 at LotusGemology.com.

Lotus Gemology Co. Ltd.

Silom 19 Building, Suite 413 • 45/1 Soi 19, Silom Road
Bangkok 10500 • Thailand
Tel: +66 (0)2 117 3616
info@LotusGemology.com • www.LotusGemology.com